



PLANETFAIR

FANS TYPE

KSA

Ø1000 ÷ Ø2150 mm

DESIGNED FOR WOOD DRYING KILNS



European
Funds
Smart Growth



Republic
of Poland



European Union
European Regional
Development Fund



Fans type KSA

Ø1000 ÷ Ø2150mm

designed for wood drying kilns



KSA
FANS

KSA fans are produced in diameters from Ø1000 to Ø2150mm. As standard, they are available with reversible (bi-directional) impellers or one direction flow impellers. They are successfully installed in installations where large amounts of air must be moved. Mainly used in very large wood drying kilns or continuous (progressive) kilns. KSA fans are equipped with aluminum impellers, built on the basis of light hollow blades. Such design provides maximum air flows in a housing with short inlet and outlet. KSA fans are adapted to operate in temperatures from -20 to +105°C. Durable, robust design allows to install high-power motors.

Additional applications: brick drying rooms.


Distinguishing features of the KSA series of types:

- Robust impeller design
- Lightweight, hollow aluminum blade
- High efficiency fan in a housing with a short inlet and outlet
- Resistance to corrosive agents
- The highest quality of components used in electric motors
- Optimized housing shape

Standard version of the fans:

- Diameters: Ø1000 – Ø2150mm
- Impellers used: reversible (bi-directional)
- Air volume range: 20000 – 120900 m³/h
- Operational temperatures: from -20 to + 105°C
- Installed motors outputs: 4.0 – 55 kW
- Motors speed: 750; 1000; 1500 min⁻¹
- Impellers made of aluminum lightweight hollow blades
- Impellers equipped with hubs made of die-cast aluminum
- Motors equipped with maintenance-free bearings
- Motors as standard adapted to the speed control by means of a frequency converter
- Machined housings with welded motor base, material: aluminum

Optional fans executions:

- Operating temperatures: -30 to +120°C
- One-direction flow impellers
- Explosion-proof EX  for explosion hazard zones: 2G; 3G; or 2D; 3D (temp. max. +40°C)
- Casing made of stainless steel
- Additional powder coating
- Flow parameters other than standard, air volume MAX: 200 000 m³/h



Lightweight impeller with hollow blades extends motor bearings lifetime

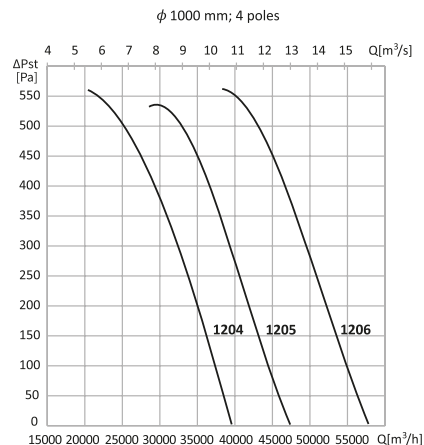
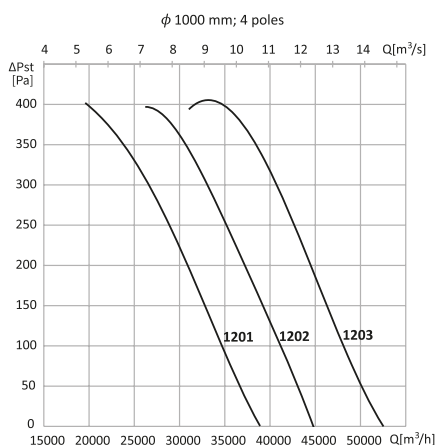
Electric motor:

- Asynchronous 3-phase
- Supply voltage: 3~ 230/400V; 400/690V
- Insulation class: F or H
- Ingress protection: IP 55

Optional motors executions:

- Supply voltage: 3~ 440V, 460V
- Frequency power supply: 60Hz
- Efficiency class: IE 4 or higher
- Ingress protection: IP 56, IP 66
- Winding temperature sensors
- Bearing temperature sensors
- Grease nipples to lubricate the bearings

Airflow curves

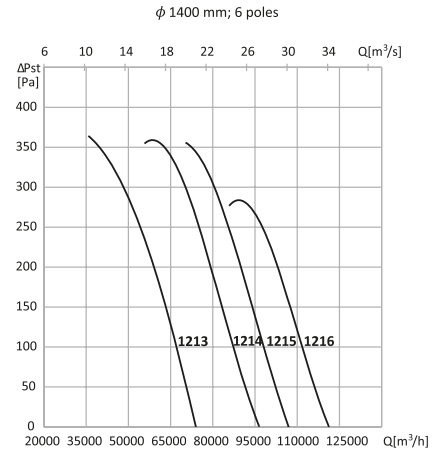
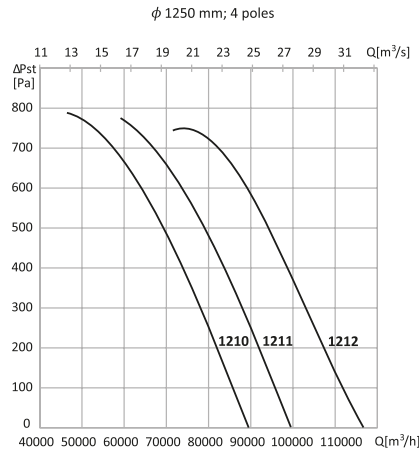
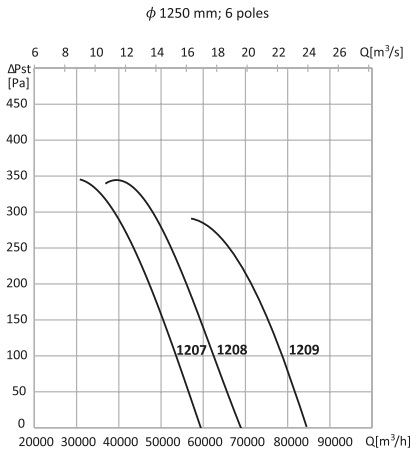


Standard maximum KSA operating temperature:

+ 105°C

Optional maximum KSA operating temperature:

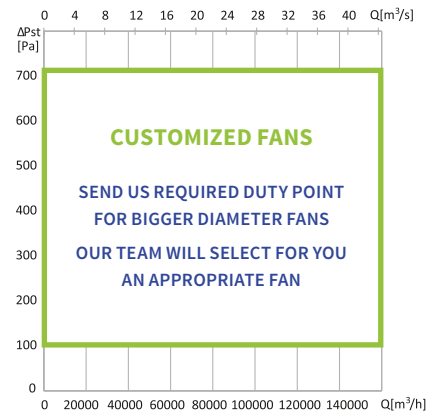
+ 120°C



Technical data

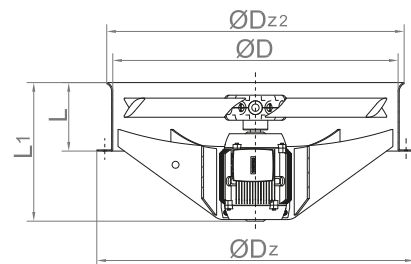
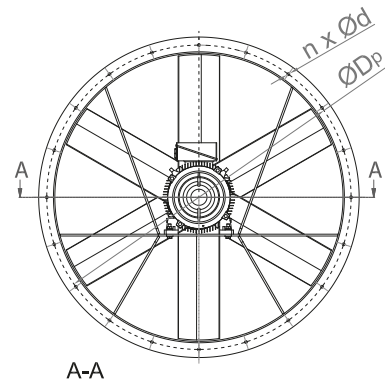
Cat. no.	Fan type	Diameter ØD [mm]	Motor output [kW]	Revolution speed [min ⁻¹]	Air volume max [m ³ /h]	Pressure max [Pa]	Mass [kg]
1201	KSA1000/4.0-4/(RA4)/4	1000	4.0	1500	38900	400	69
1202	KSA1000/5.5-4/(RA4)/4		5.5		45000	390	83
1203	KSA1000/7.5-4/(RA4)/4		7.5		52500	390	90
1204	KSA1000/5.5-4/(RA4)/6		5.5		39570	575	86
1205	KSA1000/7.5-4/(RA4)/6		7.5		47370	530	93
1206	KSA1000/11.0-4/(RA4)/6		11		57800	560	109
1207	KSA1250/5.5-6/(RA4)/6	1250	5.5	1000	59500	340	113
1208	KSA1250/7.5-6/(RA4)/6		7.5		69000	340	140
1209	KSA1250/11.0-6/(RA4)/6		11		84500	290	156
1210	KSA1250/18.5-4/(RA4)/6		18.5		89500	780	190
1211	KSA1250/22.0-4/(RA4)/6		22		99500	760	205
1212	KSA1250/30.0-4/(RA4)/6		30		116700	740	245
1213	KSA1400/7.5-6/(RA4)/6	1400	7.5	1000	74000	370	130
1214	KSA1400/11.0-6/(RA4)/6		11		96500	360	159
1215	KSA1400/15.0-6/(RA4)/6		15		107000	360	200
1216	KSA1400/18.5-6/(RA4)/6		18.5		120900	290	229

Metric diameters: Ø1600mm; Ø1800mm; Ø2150mm
Imperial diameters: Ø4'; Ø5'; Ø6'; Ø7'



Dimensions

Cat. no.	Fan type	ØD	ØDz	ØDp	ØDz2	L	L1	n	Ød
1201	KSA1000/4.0-4/(RA4)/4	1000	1160	1130	1076	280	438	16	12
1202	KSA1000/5.5-4/(RA4)/4								
1203	KSA1000/7.5-4/(RA4)/4								
1204	KSA1000/5.5-4/(RA4)/6								
1205	KSA1000/7.5-4/(RA4)/6								
1206	KSA1000/11.0-4/(RA4)/6								
1207	KSA1250/5.5-6/(RA4)/6	1250	1410	1380	1326	300	515	20	14
1208	KSA1250/7.5-6/(RA4)/6								
1209	KSA1250/11.0-6/(RA4)/6								
1210	KSA1250/18.5-4/(RA4)/6								
1211	KSA1250/22.0-4/(RA4)/6								
1212	KSA1250/30.0-4/(RA4)/6								
1213	KSA1400/7.5-6/(RA4)/6	1400	1570	1530	1476	300	647	20	14
1214	KSA1400/11.0-6/(RA4)/6								
1215	KSA1400/15.0-6/(RA4)/6								
1216	KSA1400/18.5-6/(RA4)/6								



The flow parameters presented in this brochure have been determined for the air density of $\rho = 1.2 \text{ kg/m}^3$ and are indicative data showing the general performance and pressure ranges of KSA fans.
The dimensions of the products provided are not binding and constitute general information.
The manufacturer reserves the right to change, correct and/or improve the information and products presented in this brochure.



Planetfan – is ISO 9001:2015 & ISO 45001:2018 certified company.

Planetfan Ltd. is a producer of axial and radial fans. It has an engineering staff and its own research laboratory to determine flow curves. It produces fans equipped with motors outputs from 0.75 to 200kW. Production takes place in Poland.

The full range of production is available at: www.planetfan.pl

Planetfan sp. z o.o.

ul. Rzemieślnicza 8
41-407 Imielin
Polska (Poland)

+48 32 506 61 10

+48 32 506 61 11

+48 32 506 61 12

info@planetfan.pl

www.planetfan.pl

Do you need smaller diameter fans than Ø1000mm dedicated for wood drying kilns?

Check out our **KSU** and **KSBF** series fans with diameters **from Ø500 to Ø1000mm.**



FAN
TASTIC
RESULTS

